



# Bwindi Impenetrable

COMFY  
4 days

# Bwindi Impenetrable National Park

4 Days / 3 Nights

---

## Introduction

4 days in one of the world's top locations, the 'Pearl of Africa'. One gorilla trek in Uganda to meet the world's last remaining Mountain Gorillas as well as chimpanzees face to face. Landscapes ranging from Afromontane forests, equatorial savannahs, to papyrus swamps.

---

## Highlights.

- Bwindi impenetrable national park

---

## Key

Comfy FB: Full Board

---

## Transfers

Pick Up	Drop Off	Time	Vehicle
Entebbe Airport	Entebbe Airport	TBA	Transfer Shuttle (Transfer)

---

## Day 1:

You will be picked up at your location in Kampala (Entebbe) then travel to Bwindi National Park with stop overs at the equator and lunch at Acacia Hotel in Mbarara. Proceed to Bwindi and check in to your lodge in time for dinner. (L,D)

Accommodation: Engagi Lodge Bwindi, Community Experience

Meals Plan: Full Board

---

## Day 2:

After breakfast head out for gorilla tracking then return to the lodge for dinner. (B,L,D)

Accommodation: Engagi Lodge Bwindi, Community Experience

Meals Plan: Full Board



---

### Day 3:

---

After breakfast head out for the amazing Batwa community experience then return to the lodge for dinner.

Accommodation: Engagi Lodge Bwindi, Community Experience  
Meals Plan: Full Board

---

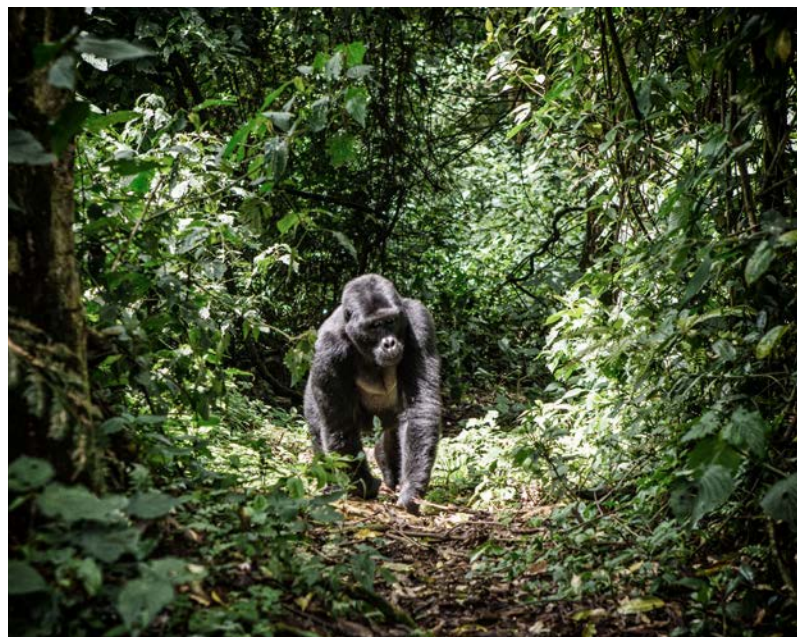
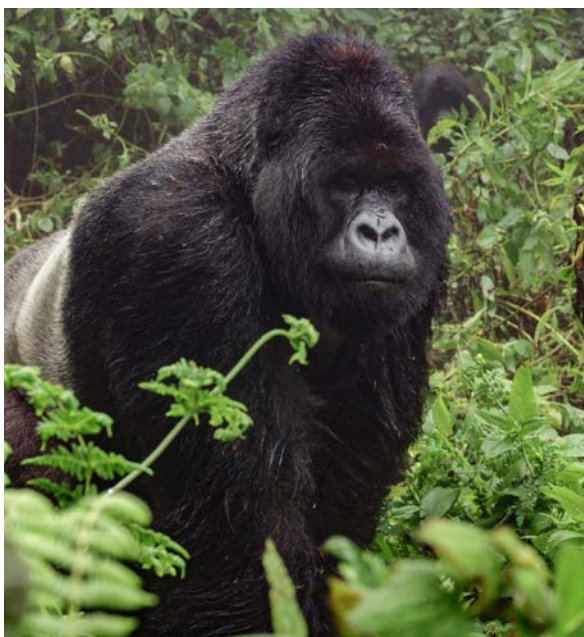
### Day 4:

---

After an early morning Breakfast, proceed to Kampala (Entebbe) where you will be dropped off at a location of your choosing. (B)

#### Inclusions:

- 3 nights' accommodation in Engagi Lodge.
- Meals on Full board basis (Breakfast,Lunch and Dinner)
- Lunch at Acacia Hotel Mbarara
- Enchanting Camp fire experience every evening
- Swimming
- Gorilla tracking
- Transfers from the airport to Bwindi and back
- One Gorilla permits per guest.





Effective  
**Tour with  
A local**

[www.smatlocal.com](http://www.smatlocal.com)